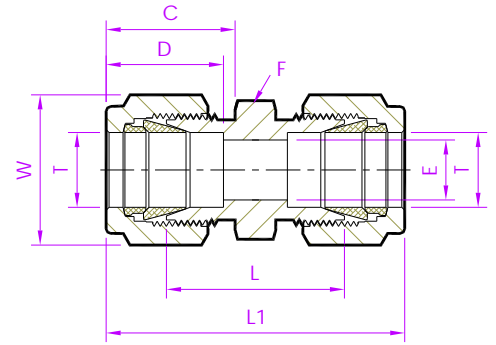


- Tube Fitting (Double Ferrule)-
Tube To Tube

Union



Metric Tube x Metric Tube

UDbefit Part No.	Equivalent Part No. Type 1	Equivalent Part No. Type 2	TUBE OD Ø T	ØE	D	C	L	L1	Body Hex F	Nut Hex W
Dimensions in Millimetres										
2M - UD	- 2MO - 6	SCM2	2	1.7	12.9	15.3	35.6	35.6	11.1	11.1
3M - UD	- 3MO - 6	SCM3	3	2.4	12.9	15.3	35.3	35.3	11.1	11.1
4M - UD	- 4MO - 6	SCM4	4	2.4	13.7	16.1	37.3	37.3	11.1	11.1
6M - UD	- 6MO - 6	SCM6	6	4.8	15.3	17.7	41.0	41.0	14.2	14.2
8M - UD	- 8MO - 6	SCM8	8	6.4	16.2	18.6	43.2	43.2	16	16
10M - UD	- 10MO - 6	SCM10	10	7.9	17.2	19.5	46.2	46.2	19	19
12M - UD	- 12MO - 6	SCM12	12	9.5	22.8	22.0	51.2	51.2	22.2	22.2
14M - UD	- 14MO - 6	SCM14	14	11.1	24.4	22.0	52.0	52.0	25.4	25.4
15M - UD	- 15MO - 6	SCM15	15	11.9	24.4	22.0	52.0	52.0	25.4	25.4
16M - UD	- 16MO - 6	SCM16	16	12.7	24.4	22.0	52.0	52.0	25.4	25.4
18M - UD	- 18MO - 6	SCM18	18	15.1	24.4	22.0	53.5	53.5	27	30
20M - UD	- 20MO - 6	SCM20	20	15.9	26.0	22.0	55.0	55.0	30	32
22M - UD	- 22MO - 6	SCM22	22	18.3	26.0	22.0	55.0	55.0	30	32
25M - UD	- 25MO - 6	SCM25	25	21.8	31.3	26.5	65.0	65.0	35	38

NOTE : 1)The E Dimension is the minimum opening. 2)Dimension L1, C, D is shown in the finger-tight position.
3)Dimensions are for reference only and are subject to change.

- ALL PART NUMBERS ARE PROPRIETARY OF THEIR RESPECTIVE OWNERS. -